

Heavy Duty Right Angled Copper Tube Terminals



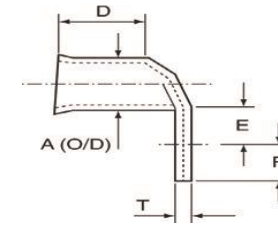
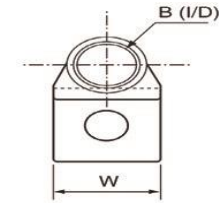
Specification.

Material:

Seamless copper tube to

BS EN 12449: 1999

BS EN 61238-1-2003 and BS 4579



Cable size mm ²	Part no.	Tub size (mm)	Dimensions (mm)							Pack Qty
			A	B	W	E	F	D	T	
10	CTT-010-06RA-PK10	6	6.9	4.4	10.5	5.9	5.1	9	2	10
	CTT-010-08RA-PK10	8	6.9	4.4	14	9.75	8.25	11	1.6	10
16	CTT-016-06RA-PK10	6	6.9	4.4	16	12	10	10	1.5	10
	CTT-016-08RA-PK10	8	8	5.6	14	9.75	8.25	11	1.7	10
	CTT-016-10RA-PK10	10	8	5.6	16	12	10	11	1.5	10
25	CTT-025-06RA-PK10	6	9.5	7	13.5	9.75	8.25	13	2.4	10
	CTT-025-08RA-PK10	8	9.5	7	13.5	9.75	8.25	13	2.4	10
	CTT-025-10RA-PK10	10	9.5	7	16	12	10	13	2	10
35	CTT-035-06RA-PK10	6	11	8.2	15.5	9.75	8.25	14	2.8	10
	CTT-035-08RA-PK10	8	11	8.2	15.5	9.75	8.25	14	2.8	10
	CTT-035-10RA-PK10	10	11	8.2	15.5	12	10	14	2.8	10
50	CTT-050-06RA-PK10	6	12.1	9.5	17.2	9.8	8.3	18	2.4	10
	CTT-050-08RA-PK10	8	12.1	9.5	17.2	9.8	8.3	18	2.4	10
	CTT-050-10RA-PK10	10	12.1	9.5	17.2	12	10	18	2.4	10
70	CTT-070-08RA-PK5	8	15	11.5	21.2	9.75	8.25	18	3.5	5
	CTT-070-10RA-PK5	10	15	11.5	21.2	12	10	18	3.5	5
95	CTT-095-08RA-PK5	8	17	13.5	24.3	12	10	24	3.5	5
	CTT-095-10RA-PK5	10	17	13.5	24.3	12	10	24	3.5	5
120	CTT-120-08RA-PK3	8	19	15	27.2	16.5	16.5	27	4	3
	CTT-120-10RA-PK3	10	19	15	27.2	16.5	16.5	27	4	3

