

Heavy Duty Copper Tube Terminals



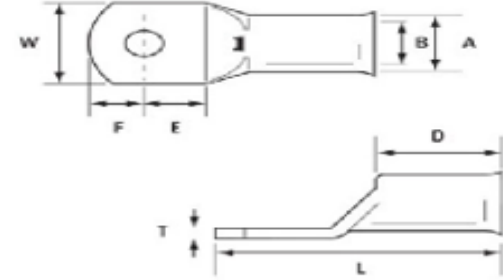
Specification.

Material:

Seamless copper tube to

BS EN 12449: 1999

BS EN 61238-1-2003 and BS 4579



Dimensions (mm)

Cable size mm ²	Part no.	Stud size (mm)	A	B	W	E	F	D	L	T	Pack Qty
6	CTT-06-06HD-PK10	6	5.3	3.4	9	7.5	5.5	10	25.5	1.7	10
	CTT-06-08HD-PK10	8	5.3	3.4	11.5	10	7	10	29.5	1.6	10
10	CTT-010-06HD-PK10	6	6.9	4.4	10.5	5.9	5.1	9	27	2	10
	CTT-010-08HD-PK10	8	6.9	4.4	14	9.8	8.3	10	35	1.6	10
	CTT-010-10HD-PK10	10	6.9	4.4	16	12	10	10	39	1.5	10
16	CTT-016-06HD-PK10	6	8	5.6	11	5.9	5.1	11	29.5	2.2	10
	CTT-016-08HD-PK10	8	8	5.6	14	9.8	8.3	11	38	1.7	10
	CTT-016-10HD-PK10	10	8	5.6	16	12	10	11	42	1.5	10
	CTT-016-12HD-PK10	12	8	5.6	18	12	10	11	42	1.3	10
25	CTT-025-06HD-PK10	6	9.5	7	13.5	9.8	8.3	13	40	2.4	10
	CTT-025-08HD-PK10	8	9.5	7	13.5	9.8	8.3	13	40	2.4	10
	CTT-025-10HD-PK10	10	9.5	7	16	12	10	13	44	2	10
35	CTT-035-06HD-PK10	6	11	8.2	15.5	9.8	8.3	14	41	2.8	10
	CTT-035-08HD-PK10	8	11	8.2	15.5	9.8	8.3	14	41	2.8	10
	CTT-035-10HD-PK10	10	11	8.2	15.5	12	10	14	45	2.8	10
50	CTT-050-06HD-PK10	6	12.1	9.5	17.2	9.8	8.3	18	46	2.4	10
	CTT-050-08HD-PK10	8	12.1	9.5	17.2	9.8	8.3	18	46	2.4	10
	CTT-050-10HD-PK10	10	12.1	9.5	17.2	12	10	18	50	2.4	10

Cable size mm2	Part no.	Stud size (mm)	Dimensions (mm)								T	Pack Qty
			A	B	W	E	F	D	L			
70	CTT-070-06HD-PK5	6	15	11.5	21.2	9.8	8.3	18	48	3.5	5	
	CTT-070-08HD-PK5	8	15	11.5	21.2	9.8	8.3	18	48	3.5	5	
	CTT-070-10HD-PK5	10	15	11.5	21.2	12	10	18	52	3.5	5	
	CTT-070-12HD-PK5	12	15	11.5	21.2	12	10	18	52	3.5	5	
95	CTT-095-06HD-PK5	6	17	13.5	24.3	12	10	24	58	3.5	5	
	CTT-095-08HD-PK5	8	17	13.5	24.3	12	10	24	58	3.5	5	
	CTT-095-10HD-PK5	10	17	13.5	24.3	12	10	24	58	3.5	5	
120	CTT-120-08HD-PK3	8	19	15	27.2	16.5	16.5	27	73	4	3	
	CTT-120-10HD-PK3	10	19	15	27.2	16.5	16.5	27	73	4	3	

