

veKonvert

New Product Introduction



**veKonvert : Victron VE.Direct to NMEA
2000 gateway**

**Connects SmartShunt, BMV and
MPPT devices to NMEA 2000 systems**

veKonvert NMEA 2000 gateway

veKonvert is a stand alone NMEA 2000 interface designed in conjunction with Victron Energy to integrate VE.Direct compatible devices such as their SmartShunt, BMV Battery Monitors and MPPT Solar Charge Controller range into NMEA 2000 systems.

This functionality already exists but requires the use of a sophisticated Cerbo module. veKonvert is a lower cost, simpler solution for smaller installations that just need the electrical data displayed on a Multi Function Display (MFD). Boaters and boat builders like a clear and uncluttered dash or nav area so integrating electrical data into the main navigation display is a popular and cost saving option.

NOTE - veKonvert is not compatible with Victron Chargers and Inverters. It should also not be plugged in to the VE.Direct interfaces of any Victron “Consumers” such as Multiplus, Quattro, Cerbo, etc.



“ veKonvert brings NMEA 2000 connectivity to Victron’s popular SmartShunt battery monitoring system – now a navigation multi function display becomes a sophisticated battery and energy management system ”

veKonvert - At a glance

- Universal NMEA 2000 gateway for Victron products with a VE.Direct interface (see compatibility list)
- Enables battery management or solar charge monitoring on compatible Multi Function Displays (Raymarine, Garmin, Navico, Furuno etc)
- Provides battery voltage, charge/discharge current, state of charge and time to depletion based on sophisticated algorithm
- Supports AUX Input – Starter Battery, Mid-Voltage and Temperature sensor
- Easy installation, plug ‘n’ play connectivity and self-powered from the NMEA 2000 bus
- Generates NMEA 2000 Alerts, from any BMV or SmartShunt Alarms
- Supports multiple SmartShunts for larger multi battery systems



“ **veKonvert is compatible with all leading multi function displays including Raymarine, Navico, Garmin and Furuno. Boat battery and electrical data is then available on the MFD** ”

Typical Multi Function Display pages

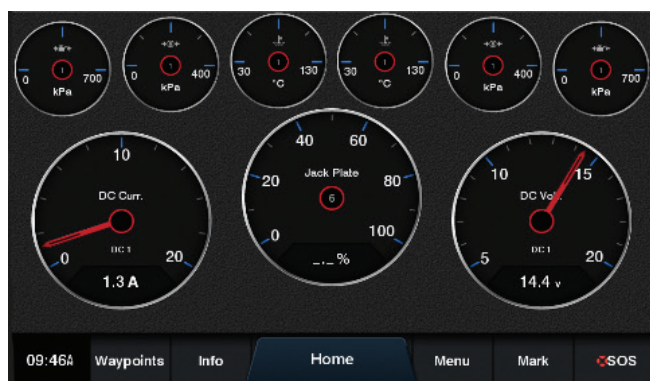
Popular MFDs all have attractive and easy to understand displays of boat electrical & battery data.

Raymarine

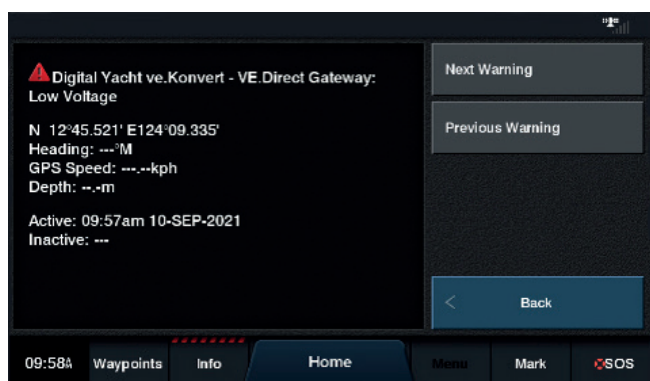
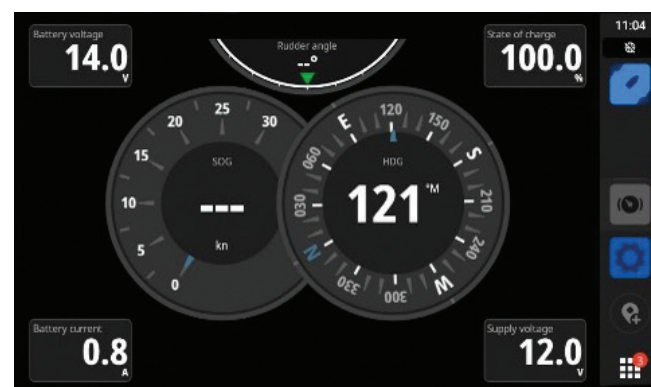


Garmin

MFDs also support NMEA 2000 Alerts that veKonvert generates from SmartShunt Alarms



Navico



veKonvert - Compatibility List

veKonvert is compatible with the following Victron products:

- BMV -700
- BMV -702
- BMV -700H
- BMV-712 Smart
- BMV-710H Smart
- BMV-712 Smart Rev2
- SmartShunt 500A/50mV
- SmartShunt 1000A/50mV
- SmartShunt 2000A/50mV
- All MPPT Charge Controllers

NOTE - veKonvert is not compatible with Victron Chargers and Inverters. It should also not be plugged in to the VE.Direct interfaces of any Victron “Consumers” such as Multiplus, Quattro, Cerbo, etc.