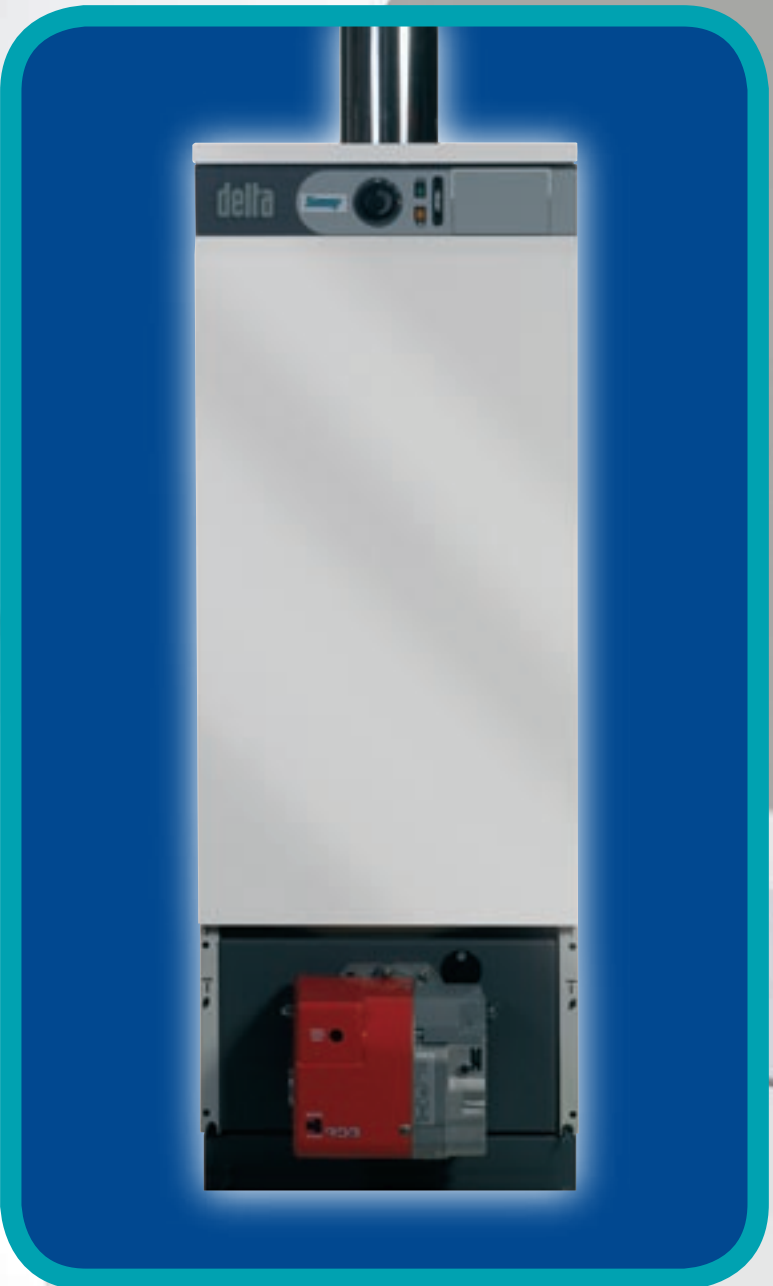


SOMY BOILERS & CALORIFIERS

POWER AT YOUR CONTROL

Somy

SHIPS BOILERS & CALORIFIERS



Somy



ACCESSORIES



Safety release valves available at various ratings. Combined pressure & temperature safety valve also available.



Blender valves to automatically control hot water feed to non scalding temperature.



Primary & secondary circulators.



Primary pump filter.



Sealed system kits featuring expansion tank, pressure gauge, pressure release valve & filling loop.

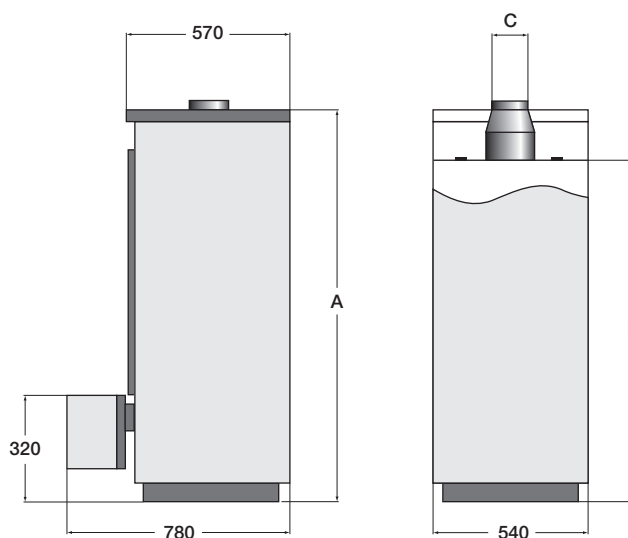


Automatic air vents. Brass bodied units prevent air locks.



Programmable room thermostats

SOMY DELTA BOILERS



The Delta boiler again has an integral stainless steel calorifier. The flue gasses pass through the calorifier transferring residual heat to the domestic hot water. This makes the Delta an extremely efficient boiler for vessels with limited 240V electrical capacity. The top flue connection gives the unit a very small foot print.

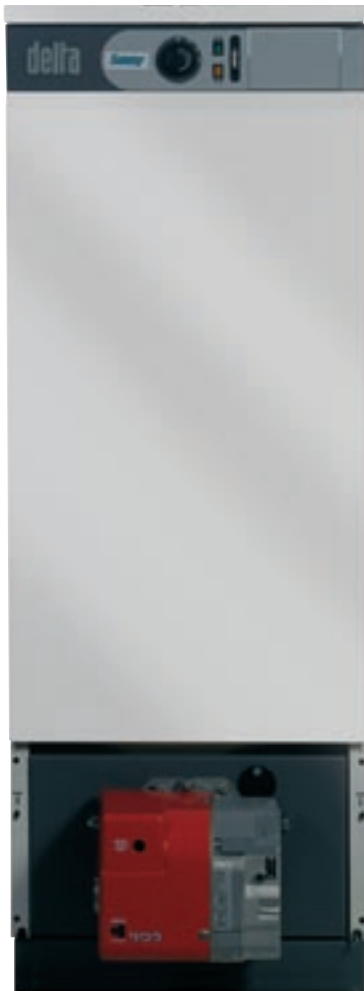
Model	F25	F35	F45
Kw output	23-33	33-45	41-61
Dim. A(mm)	1497	1697	1497
Dim. B(mm)	1260	1460	1260
Dim. C(mm)	130	150	150
Hot water Capacity	75L	75L	65L
Hourly hot water Output@45°C	799L	1027L	1334L
Max working pressure of hot water	10 BAR	10BAR	10BAR

The Somy range of ship's heating systems offers effective and reliable solutions for your on board requirements. The range was proven in the inland commercial shipping market in Holland where its reputation spread to off shore commercial operators, Ferries, Tugs, and lately

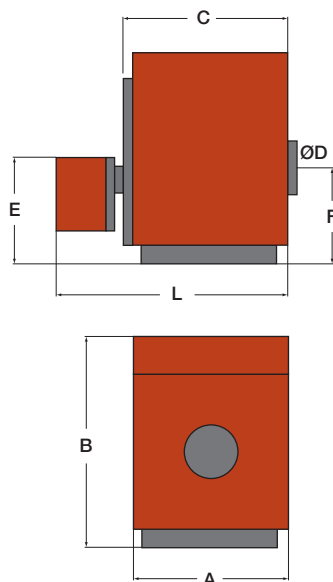
SOMY COMPACT BOILERS

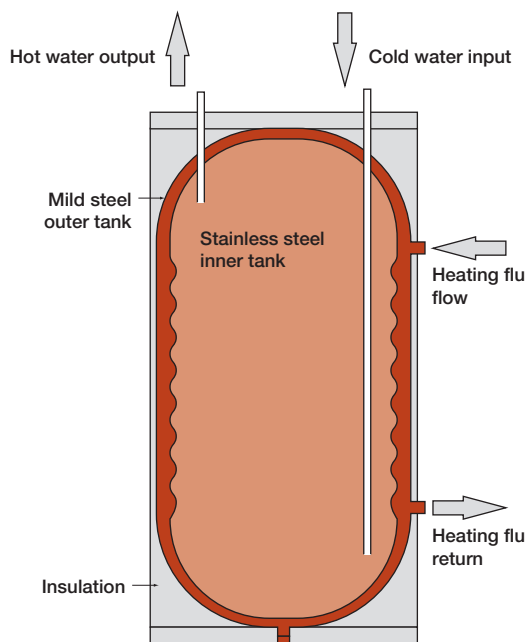
The Compact Boiler Range is ideal for applications where there is a separate hot water calorifier or for installations where only heating is required.

Model	C0814	C1220	C2028	C2836	C3650
Kw Output	10-14	14-23	23-32	32-42	42-58
Dim. A(mm)	368	470	470	470	530
Dim. B(mm)	635	665	700	765	805
Dim. C(mm)	490	570	566	566	656
Dim. D(mm)	75	130	130	130	150
Dim. E(mm)	340	340	340	340	340
Dim. F(mm)	420	456	445	510	550
Dim. L(mm)	700	780	780	780	875



private vessels from narrow boats through to large yachts. The Delta incorporate a stainless steel calorifier rated at 10 Bar for high pressure pumped systems. The high recovery rate offered by the tank in tank design offers continuous quantities of hot water for high demand applications. Separate calorifiers are available for boiler based systems or for hot water generation, using waste engine heat.





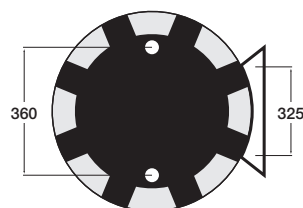
Somy calorifiers feature a specially designed TIG welded stainless steel hot water cylinder which is enclosed in an outer tank heated by a boiler or waste engine heat. These cylinders are ideal for use with pumped water systems as they are designed to operate at up to 10 Bar. The whole inner cylinder acts as a heating surface meaning far faster heating rates and no stratification. The fast heat up rate combined with superb insulation gives unrivalled flow rates to satisfy even the most demanding users.

Apart from the standard range we can supply Tank in Tank cylinders with total capacities of up to 1800 litres.

HL Calorifiers for horizontal or vertical mounting.

No immersion option.

Model	HL100	HL130	HL160	HL210	HL240
Total capacity	105	130	161	203	242
Heating fluid cap. (L.)	30	31	35	39	42
Hot water capacity (L.)	75	99	126	164	200
Flow rate (L. per hr.)	2100	2600	3500	4200	5500
Heating fluid connections (ø)	5/4"	5/4"	5/4"	5/4"	5/4"
Safety valve connections (ø)	3/4"	3/4"	3/4"	3/4"	3/4"
Hot water connections (ø)	3/4"	3/4"	3/4"	3/4"	3/4"
Heating surface (m ²)	1,03	1,26	1,54	1,94	2,29
Weight Empty (Kg)	40	47	55	65	75
Dimensions A	818	978	1178	1450	1697
Dimensions C	600	760	960	1232	1479
Max operating pressure (bar):					
Heating fluid	3	3	3	3	3
Hot water	10	10	10	10	10



HL calorifiers (without immersion) can be mounted vertically, (with water connections top or bottom) or horizontally. If mounted horizontally the mounting brackets must be fixed to a vertical surface.

Smartline Calorifiers for vertical mounting only.

With immersion.

Model	SL130	SL160	SL210	SL240	SL320
Total capacity	130	161	203	242	318
Heating fluid cap. (L.)	55	62	77	78	55
Hot water capacity (L.)	75	99	126	164	263
Flow rate (L. per hr.)	2100	2600	3500	4200	6200
Heating fluid connections (ø)	1"	1"	1"	1"	6/4"
Hot water connections (ø)	1"	1"	1"	1"	6/4"
Heating surface (m ²)	1,03	1,26	1,54	1,94	2,65
Weight Empty (Kg)	55	65	75	87	140
Dimensions A	960	1160	1435	1680	1550
Dimensions B	555	555	555	555	660
Max operating pressure (bar):					
Heating fluid	3	3	3	3	3
Hot water	10	10	10	10	10
Immersion heater (Kw)	2.2	2.2	2.2	2.2	2.2

