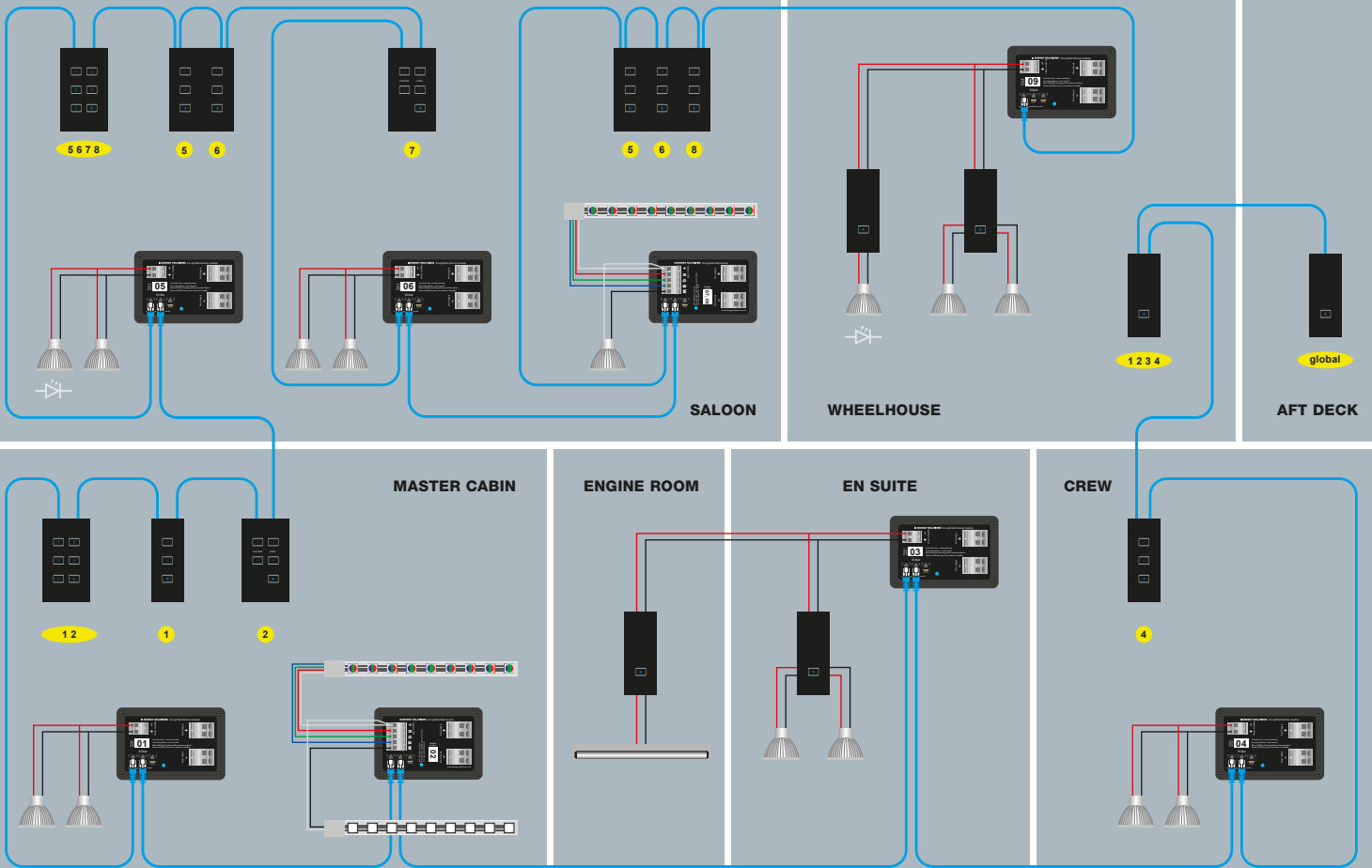


## ES LIGHTNET 5 - Updated and improved dimmer, mood and LED colour lighting system



### ES LIGHTNET 5 - Next generation yacht lighting

- Dimmer, mood and colour modules
- Simple networked cabling
- Stabilised DC output for maximising bulb life
- Global onboard / offboard switch

POWER AT YOUR CONTROL

# ES LIGHTNET 5 - Updated and improved dimmer, mood and LED colour lighting system

ES LightNet 5 is the latest version of our sophisticated lighting system with dimmer, mood and colour modules suitable for luxury vessels of all sizes. The system allows vessel owners to create individual lighting effects in different areas as well as allowing global control of the entire system.

## Stabilised output

The units provide stabilised DC output, so that even if the input voltage fluctuates, the DC output remains constant; resulting in a consistent ambience and longer life for the system's light bulbs.

## Reduced installation time

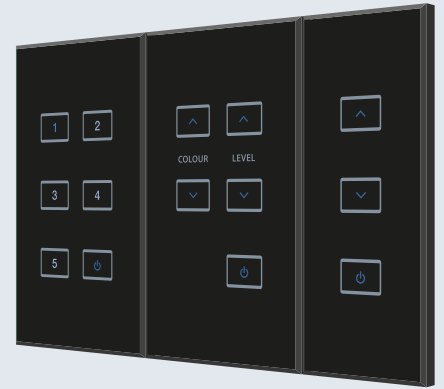
With intelligent cabling the ES LightNet 5 system is easy to install, with straightforward programming and a quick, intuitive step-up.

As all the modules communicate over a common bus the wiring is simplified and installation is dramatically reduced compared to traditional lighting systems.

## Switches

The system has evolved and now offers glass capacitive touch style controls which are slim for easy installation and sit virtually flush to the wall.

All power buttons stay lit at half brightness when the lights are off for ease of location in the dark. All elements of the switches then illuminate when the lights are turned on. Switches go into a low power standby mode when the global off signal is received, to minimise power consumption.



## System components - Controls



### Dimmer Control

An off / resume switch with dimmer control.



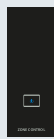
### Mood Control

Available with 5 presets so that 5 different levels of lighting can be preset for all occasions. Can control up to 10 dimmer modules. Simple, user settable, presets work in a similar fashion to car radio station controls.



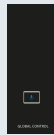
### RGB Control

This control allows for coloured lighting to be incorporated into the mood lighting system. A number of colours can be selected to create a variety of effects. The light intensity can also be controlled.



### Off / Resume Zone

To switch all lights on and off as you enter or leave a zone. Can be programmed, for example, to leave one light on. Lights dim to 50% to provide user feedback before turning fully off after a time delay.



### Off / Resume Global

To switch all lights on and off as you enter or leave the vessel. Can be programmed, for example, to leave one light on to allow you to disembark safely. Lights dim to 50% to provide feedback before turning fully off after a time delay.



### Off / Resume Programmable

Programmable switch for controlling lights in a zone on-board. Can be programmed, for example, to turn off all lights in a crew area or lower accommodation. Lights dim to 50% to provide user feedback before turning fully off after a time delay.

## ES LightNet 5 System Components

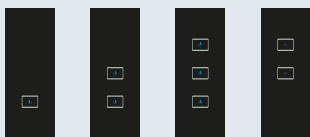
There are two distinct categories of modules in a ES LightNet 5 system. These are base units and controls. Base units are the power modules that take the DC supply and carry out the hard work of driving the LEDs and lamps to the desired brightness and colours. Controls are the user interface to the system and allow control of brightness and colour levels.

## Modular System

The ES LightNet 5 system may be configured in virtually limitless ways due to its unique addressing and configuration system. The illustration on the front of this datasheet shows a system for a luxury vessel. A voltage stabiliser is used to supply a steady 24V supply to switched lamps. A dimmer unit is used to supply overhead lighting and has two way controls by means to two up/down/off controls. RGB mood lighting is supplied using an RGB base unit and controlled using a five button RGB control enabling colour and intensity to be adjusted.

A mood pre-set control is used to store scenes set using the dimmer and RGB controls. Five pre-set scenes may be configured and this provides a simple way to switch on lighting as a cabin is entered.

All lighting may be switched off and resumed to its previous setting using the off/resume control.



## Hardwired

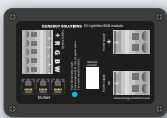
A matching range of 'Hardwired' controls are available with one, two and three power buttons and an Up / Down control. The units are rated at 5 amps, two way switching is allowed for.

## System components - Base Units



### Dimmer Module

This unit provides the power to the lamps. It can accept a 16mm<sup>2</sup> feed which can be looped on to other modules. The unit can be located close to the lamps it is feeding, keeping power wiring to a minimum. It can be used as a dimmer or independently as a voltage stabiliser (controlled only by an off/resume signal).



### 4 Channel / RGB Dimmer Module

4 channel dimmer module can be used for controlling a variety of lighting setups. It can be programmed as 3 channels for RGB with an intensity tracking white output on the last channel or it can be set up as 4 separately controllable channels of lighting (which can be incandescent, LED or a mixture).

## ES LightNet on luxury yacht



Please contact us for further information and order details.