

FT NavVision Modules and Viewers



FT NavVision

FT NavVision is a modular, integrated monitoring and control system for yachts and commercial vessels. It monitors onboard equipment and provides a concise overview of vessel systems status. Screens are user configurable through an intuitive menu driven interface.

Features Include:

- Automatic alarm indication of monitored parameters.
- Continuous data logging.
- Remote control of accessory circuits and lighting.
- Modular network topology allows additional displays to be distributed throughout the vessel.
- SMS text messaging of alarms right to your mobile phone.
- Remote access to vessel over the internet.
- Clean and intuitive view of all instrumentation.
- Highly modular and configurable from basic to comprehensive monitoring and control.
- All data can be easily viewed at the helm using a multiple display “glass bridge” allowing for higher instrument density.
- One touch day, sunlight and night viewing modes.
- Customizable color palette.
- Non-proprietary hardware for worldwide serviceability and reliability.
- Interfaces with existing equipment sensors.

A worldwide distribution network provides you with support when and where you need it. Don't settle for less, ask for the unsurpassed performance and expandability of FT NavVision.



FTNAV-LITE

FT Nav lite includes the following FT NavVision software:

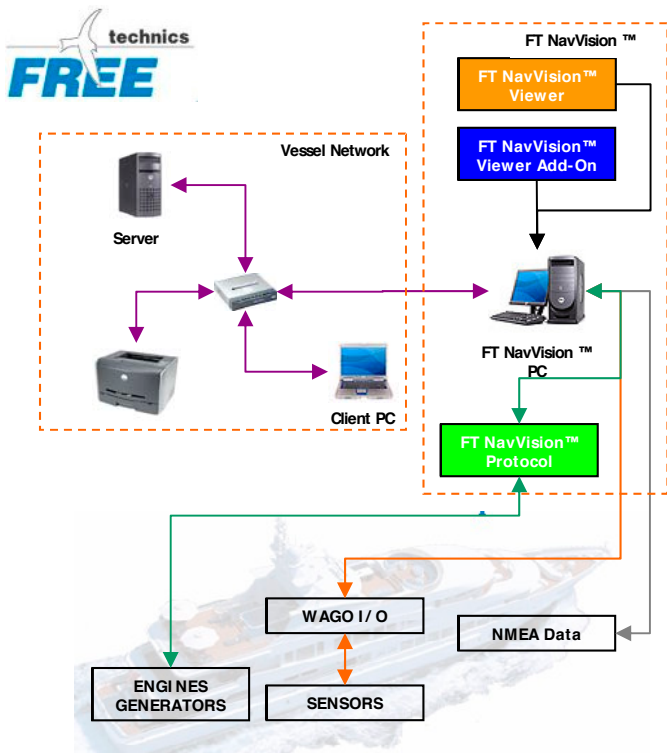
- Chart plotter with (3) NMEA instruments
- AC/DC system viewer
- Tank and multiple instrument viewer
- Alarm panel
- Data log book
- Customizable taskbar including day, sunlight and night presets
- User level security
- Multiple monitor configuration

Provides interface hardware for:

- (2) 120VAC Sources (frequency, voltage, current and power)
- (4) 0-30VDC Voltage inputs
- (1) House battery (voltage, current, % charge and time remaining)
- (2) Alternator charge current inputs
- Monitoring for up to (6) tanks
- (16) digital inputs for pumps, alarms and security.

Does not include PC hardware, see dealer for recommendations.

FT NavVision Modules and Viewers



Monitoring System Components Overview

VIEWERS

Navigation

FT NavVision™ has a very powerful navigation module and supports several chart formats.



BSB Charts

BSB charts are raster charts produced by several hydrographical offices worldwide and are updated by Notices to Mariners periodically. Features include high quality reproduction and seamless chart capability. **Most navigational charts are in this format.**

DKW Charts

With FT NavVision™ it is also possible to import DKW charts (WinGPS Pro).

Scanned Charts

FT NavVision™ allows scanning of paper charts. A Scanning Module is included which allows the importation of any chart or map.

C-MAP

C-MAP has a worldwide library of electronic charts (more than 20,000 charts), covering nearly every port and harbour worldwide.

Waypoint database

FT NavVision™ provides storage for Worldwide waypoint data.

Communication with GPS

It is easy to transfer waypoints to and from supported GPS systems. There are many GPS models included in the communication module of the waypoint management software.

Navigation

Includes basic functionality listed above

Navigation Extra

Includes items in Standard (listed above) plus the following:

- NEMA autopilot interface
- Virtual autopilot for NKE
- Four (4) NMEA instruments

Navigation Professional

Includes items in Standard and Extra plus the following:

- C-Map chart capability
- Viewer with 13 instruments and 15 barograph instruments
- Alarm settings per instrument

Engine Viewer (Single or Dual)

FT NavVision™ Engine Viewer gives “real-time” information about engines, generators, tanks and other ship’s equipment. Engine data may be shown on the standard Single or Dual Engine Viewers.

Single Engine Viewer for one engine and one generator, shows five configurable (analog, digital or graphical) instruments, two digital instruments and four indicators.

Dual Engine Viewer for two engines and two generators, shows four configurable (analog, digital or graphical) instruments, two digital instruments and twelve indicators.



Single Engine Viewer Shown

Available data

Engine manufacturers have different ideas about the quantity and format of engine data required. FT NavVision™ has the capability of showing more than forty engine parameters and almost fifty generator parameters.

Communication

To receive and send data FT NavVision™ can use serial communications as well as Ethernet and USB.

The following protocols are supported:

- NMEA
- SAE - J1587/ J1708
- Cat-Link
- Can-bus
- 485-bus
- nke-bus
- Advantech I/O
- WAGO I/O
- Mod bus

Alarms

Alarms can be configured independently for all available instruments. It is possible to configure an independent shut down alarm to allow engines, generators or other equipment to be shut down automatically. In addition, external lights or audible warning devices can be activated.

Logbook

All alarms, switching events and abnormal situations are recorded in a logbook viewable from within the program.

Layout

The Engine Viewers are delivered with a standard layout. It is possible for each user to customize the viewer and save configurations. Layouts can be password protected.

Instruments may be configured, at the push of a button, to Analog, Digital and Graphical views.

Tank Viewer

Tank Viewer provides information and data for up to twenty (20) individual tanks.

All available ships data may be shown in the tank viewer screen; the choice is only limited by existing licenses. Other parameters such as battery level or engine parameters are shown in their own values such as Volts or PSI using configurable (analog, digital or graphical) gauges.

FT NavVision Modules and Viewers



Set up values

Tanks levels may be shown in 16 different colours, making it possible to differentiate between tank systems. Tank measurements are shown as a percentage of capacity.

Tank Designations

Tanks are named according to their use, standard names may be edited to suit each individual application.

Calibration

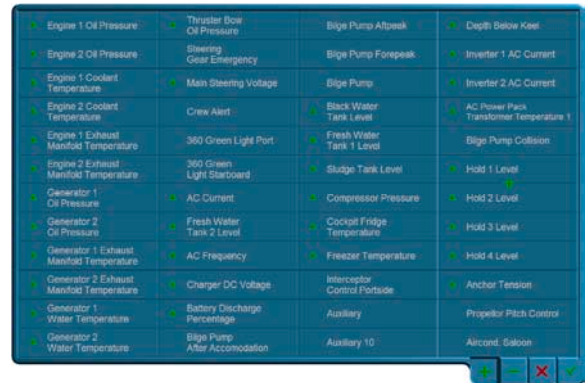
FT NavVision™ has a configurator to calibrate tank levels for all shapes and sizes of tank.

Connection to Sensors

Tank levels may be measured using several kinds of sensors. FT NavVision™ will also verify broken sender wires and other system abnormalities.

Digital Alarm Viewer

In addition to the instrument viewers, FT NavVision™ has a stand alone Alarm Viewer. The Alarm Viewer will run in the background monitoring all of it's parameters until an out of limit situation occurs.



The viewer is totally configurable up to 48 alarm points. A Lloyds certified alarm viewer is also available.

Types of Alarms

The Alarm Viewer will work with normally open or normally closed switches. No special hardware is required to interface with the alarm viewer.

Alarm Zone

Up to two alarms will appear in the alarm zone of the PC taskbar, if more alarms occur, the list scrolls. Alarm Notification is also broadcast over the network.

Alarm Disable

It is possible to set criteria to prevent alarms, for example when you shut down an engine or when you start up an engine. The alarm is for a set duration, giving the system time to reach steady state.

Alarm Levels

- **Administrator Alarm** - An Administrator Alarm is an alarm with the highest priority and is broadcast on every PC running FT NavVision on the common network.
- **Sound Alarm** - A Sound Alarm is an audible alarm with a lower priority than an administrator alarm. This alarm will be broadcast over the network.
- **Shut Down Alarm** - With this Alarm it is possible, in combination with a WAGO Digital Output Module, to shut down equipment, engines and other ship's system when an alarm situation occurs.

Basic NMEA Viewer

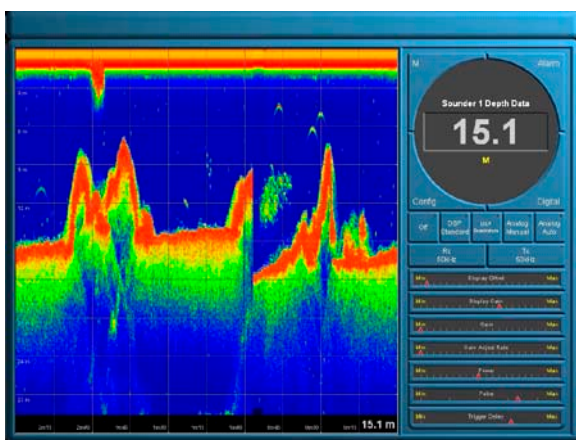
The Basic NMEA Viewer module consists of six configurable (analog, digital or graphical) instruments.



The basic instruments can be used individually or as an overlay on all other viewers. Each instrument can be scaled appropriately to fit the screen.

Video Sounder Viewer

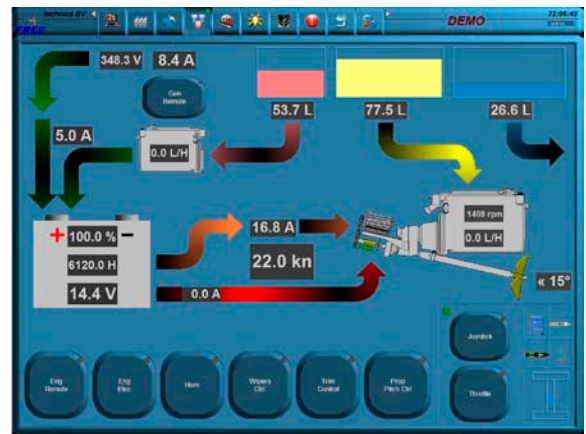
The video sounder is a full-featured dual frequency, high resolution colour fish finder, it functions in both analog and DSP mode (Digital Signal Processing).



The 50kHz/ 200kHz dual frequency depth transducer provides exceptional resolution and definition.

ADD-ON VIEWERS

Layout Viewer



The Layout Viewer is designed to graphically represent machinery and systems and to present an overview of those systems on one screen. Flow diagrams, tank levels, battery parameters and charging system information may also be graphically presented.

Monitoring of controllable functions is made very simple by the use of symbols and icons.

Graphical Image Import

- Profiles for engines, generators, machinery rooms and deck layouts.
- Digital instruments for every available parameter.
- Control buttons for all onboard equipment.
- Flow direction arrows and level graphics.
- Icons for reproducing lights, instruments and equipment.
- Labels to designate the various functions.

Freedom to Design

The Layout Viewer gives boat owners the ability to design their own screens. This can be done by simply attaching functionality to a deck layout, engine or generator schematic or lighting plan. Layout Viewer has the possibility of configuring up to 7 different custom screens.

FT NavVision Modules and Viewers

Switch Viewer

The Switch Viewer provides an additional twenty-four (24) switch outputs and a vessel mimic panel.



Switches are connected to FT NavVision™ using the digital/ analog I/O capability of the WAGO 750 system.

Dual RPM Viewer



The Dual RPM viewer is an add-on viewer and provides two configurable (analog, digital or graphical) and nine digital instrument displays.

Triple RPM Viewer

The Triple RPM viewer is an add-on viewer and provides three configurable (analog, digital or graphical) instruments and eighteen digital instrument displays.



Docking Viewer

The Docking Viewer consists of analog and digital instruments specifically for docking large yachts or offshore vessels.



Indicator Viewer

The Indicator Viewer is additional to an Engine Viewer (single or dual) or Standard Viewer. It provides an additional twelve analog gauges.



AC/DC Viewer

The AC/DC add-on viewer provides a complete panel for the vessel electrical system.



This module provides eight configurable (analog, digital or graphical) style gauges and twelve digital gauges.

Digital/Analog Viewer

The combination Digital/Analog Viewer provides seven additional configurable (analog, digital or graphical) instruments with seven digital indicators.



This module is additional to the Engine Viewer (single or dual) or Standard Viewer.

(Panel with circuit breaker image)

Energy Solutions is the UK dealer for FreeTechnics FT NavVision. Supplying to clients the full software solution and necessary hardware that are required in each application.

Working closely with you to pinpoint your exact requirements and building the system in a timely and cost effective way Energy Solutions will bring your FT NavVision to life.

Applications

FT NavVision is suitable for a wide range of applications:
(if we have any images to go with these that would fill some space!)

Marine

- Mega Yachts
- Yachts
- Power boats
- Workboats
- Commerical Shipping
- Ferries
- Pilot Boats

Industrial

- Oil Rigs
- Defense (command and control)
- Dredgers

FREE Demo Download

If you would like to download a Free Demo Version it is available at www.freetechnics.nl

FT NavVision UK Dealer

Energy Solutions
George Summers Close
Medway City Estate
Rochester
Kent ME2 4EL

T: +44 1634 290772
F: +44 1634 290773

www.energy-solutions.co.uk
sales@energy-solutions.co.uk

Energy Solutions - Distributors of electrical power products for the marine and mobile industries. System designers and bespoke panel builders.